



PROGRAMMES AFTER 10+2 [FEE & SCHOLARSHIP DETAILS]

DISCIPLINES

Engineering | Computer Applications | Management | Economics | Law | Hotel Management & Tourism |
Biotechnology | Microbiology | Forensic Sciences | Agriculture | Food Technology | Nutrition and Dietetics |
Botany | Zoology | Chemistry | Physics | Mathematics | Commerce | Architecture | Planning |
Interior & Furniture Design | Product & Industrial Design | Fashion Design | Multimedia and Animation |
Journalism & Film Production | Fine Arts | Performing Arts | Political Science | Geography | History |
Psychology | Public Administration | Sociology | Arts (Humanities) | English & Foreign Languages | Indian
Languages | Education | Physical Education | Pharmaceutical Sciences | Ayurvedic Pharmaceutical Sciences |
Medical Laboratory Sciences | Physiotherapy

SCHOLARSHIP SCHEME

Lovely Professional University strongly believes that monetary constraints should not be an obstacle for a student to have access to quality education. So the university offers Scholarship (upto Rs. 4.9 Lac per student) in more than 200 programmes of the University, ranging from Diploma Programmes to Ph.D. The scheme is as under:

1. Scholarship Categories: Scholarships are awarded to candidates based on their performance on any of the following categories:

- **Eligibility Qualification** (for example 10+2 for Under Graduate Programmes)
- LPU's Entrance and Scholarship Test : **LPUNEST**
- Certain **National Level Entrance Tests** [JEE (Mains), NEET, UCEED, LSAT etc.]

2. Scholarship Brackets: For each category mentioned above, three brackets of Scholarship (Bracket 1, 2 and 3) are defined. Each bracket represents specific criteria (for example scores in qualifying exam) which an applicant has to reach for him/her to fall in that particular bracket. The criteria in each bracket decreases as it proceeds and so does the scholarships. So, the students meeting the requirement of Bracket- 1 gets the highest Scholarship and those in Bracket - 2 or 3 gets relatively lesser scholarship.

3. Scholarship Phases: The amount of Scholarship also depends on the Phase in which the candidate takes Admission in the University. Admissions in LPU are done in different Phases, which are bifurcations of the Admission time period. **Phase - I** starts as early as **January 2020** and continues till **April 2020**. The subsequent phases (Phase-II, III, IV) are conducted only if the seats in the concerned Programme remain vacant. The amount of Scholarship reduces with each passing phase and no Scholarship is offered in Phase - IV (if conducted) will be updated on the University website www.lpu.in.

4. Amount of Scholarship in different Phases and Brackets : The Scholarship amount/ percentage varies as per the following: Table 1 for all Programmes except B.Tech. CSE including Hons., Integrated, Dual Degree & Lateral Entry. Table 2 depicts scholarship amount/ percentage of B.Tech. CSE including Hons., Integrated, Dual Degree, Lateral Entry & B.Sc. (Hons.) Agriculture.

Table 1

	Bracket-1	Bracket-2	Bracket-3
Phase - I	50%	40%	30%
Phase - II (if offered)	40%	30%	20%
Phase - III (if offered)	30%	20%	10%

Table 2

	Bracket-1	Bracket-2	Bracket-3
Phase - I	40%	30%	20%
Phase - II (if offered)	30%	20%	10%
Phase - III (if offered)	20%	15%	10%

To know the fee after scholarship for different programmes, refer the 'Fee Table' mentioned at the last page.

5. Details of Scholarship Brackets

Scholarship brackets and various categories as mentioned in point no. 1 and 2 is detailed below:

(i) **On the basis of Eligibility Qualification:**

- **Bracket 1** - Students scoring more than 95% marks in eligibility qualification falls in Bracket -1 and are thus eligible for Scholarship of 50% of Programme fee in Phase-I [except for B.Tech. CSE including Hons., Integrated, Dual Degree, Lateral Entry & B.Sc. (Hons.) Agriculture the details of which are mentioned in Table 2].
- **Bracket 2** - Students scoring between 90% to 94.99% marks in eligibility qualification falls in Bracket-2 and are thus eligible for Scholarship of 40% of



Programme fee in Phase-I [except for B.Tech. CSE including Hons., Integrated, Dual Degree, Lateral Entry & B.Sc. (Hons.) Agriculture the details of which are mentioned in Table 2].

- **Bracket 3** - Students scoring between 80% to 89.99% marks in eligibility qualification falls in Bracket-3 and are thus eligible for Scholarship of 30% of Programme fee in Phase-I [except for B.Tech. CSE including Hons., Integrated, Dual Degree, Lateral Entry & B.Sc. (Hons.) Agriculture the details of which are mentioned in Table 2].
- **For Lateral Entry Programmes**, in addition to Eligibility Qualification, Scholarship will be offered on the basis of qualification previous to Eligibility qualification. For example, someone seeking admission in B.Tech (Lateral Entry) can seek scholarship on the basis of Diploma (Eligibility Qualification) or 10th (Qualification previous to Diploma)

(ii) **On the basis of LPUNEST:**

For each Scholarship bracket, cut-offs are determined by the University and accordingly the Scholarships as mentioned in Table - 1 are offered. To know the tentative cut-off for various programmes, refer university website www.lpu.in

(iii) **On the basis of National Level Entrance Tests:**

- Performance in the following National Level Entrance Tests is considered for offering Scholarship in LPU:
 - JEE (Main), NEET, UCEED, CLAT, LSAT, NATA.

- For every test mentioned above, LPU has determined the cut-offs for various Scholarship brackets. E.g., In case of JEE (Main) the cut-off for Scholarship Bracket-1 is 95 percentile, for Bracket-2 it is 90 percentile and for Bracket-3 cut-off is 80 percentile. So anyone scoring 94 percentile will fall in Bracket-2 and get Scholarship of 40% in Phase-I. To know the cut-offs for other National Level Tests, please refer university website.

6. Other Scholarships offered by the University

Apart from the scholarship on the basis of LPUNEST-2020 Qualifying Examination explained above, LPU also offers scholarship in the following areas to provide financial assistance to the excellent students to enable them to pursue professional education.

- Scholarship on the basis of Performance in Sports
- Scholarship on the basis of Performance in Cultural, R&D and Co-curricular activities
- Scholarship on the basis of Performance in Social Service and Bravery Awards
- Fee Concession for Defence, Central Armed Police Forces (CAPF) personnel and their dependents
- Special Scholarship scheme of full Programme Fee and Residential Fee waiver to top 20 students of every recognized board (State as well as Central)
- Scholarship for Orphan Applicants
- Scholarship for Persons with Certain Disability

For details regarding scholarship, please refer university website i.e. www.lpu.in

B.Tech.
B.Tech. (Hons.)
Integrated B.Tech. - M.Tech.
Integrated B.Tech. - MBA
Dual Degree B.Tech. - M.Tech.
Dual Degree B.Tech. - MBA

STREAMS/ MAJORS OFFERED IN ENGINEERING

LPU is offering not only conventional Engineering streams/ majors but also one of its kind trend setting streams/ majors transforming Engineering education to leap into the next leg of technology upbeat.

Examine the streams/majors given below to determine which Engineering concentration appeal to you:

- Electronics and Communications Engineering (ECE)
- Computer Science and Engineering (CSE)
- Information Technology (IT)
- Mechanical Engineering (ME)
- ME - Mechatronics
- Automobile Engineering (AE)
- Aerospace Engineering
- Civil Engineering (CE)
- Electrical Engineering (EE)
- Electrical and Electronics Engineering (EEE)
- Robotics & Automation
- Biotechnology (BT)
- Bioinformatics
- Food Technology
- Biomedical Engineering
- Chemical Engineering (CHE)
- Petroleum Engineering

SPECIALIZATIONS/ TRACKS * FOR ENGINEERING PROGRAMME

Engineering systems and products have become fabulously complex creating the want of specialized professionals. LPU has gauged the future in close association with the industry and has crafted specializations within the streams. An Engineering graduate upon learning the basics progresses into deeper learnings of one of the specialization of a discipline to be ready to handle futuristic devices and processes. Some of such Engineering Minors are :

Electronics and Communication Engg. (ECE)

- ECE with specialization in Internet of Things

Computer Science and Engineering (CSE)

- CSE with specialization in Machine Learning
- CSE with specialization in Data Science
- CSE with specialization in Big Data
- CSE with specialization in Cyber Security
- CSE with specialization in Full Stack Web Development
- CSE with specialization in Android Application Development
- CSE with specialization in Cloud Computing

Mechanical Engineering (ME)

- ME with specialization in Robotics and Mechatronics

Civil Engineering (CE)

- Energy, Environment & Society

- Industrial Waste Management
- Water and Air Testing Laboratory.
- Sustainable Project Management.

Electrical Engineering (EE)

- Instrumentation Technologies
- Power Electronics and Drives
- Robotics and Automations

Biotechnology (BT)

- Pharmaceutical Biotechnology
- Food Biotechnology
- Biochemical and Bioprocess Technology

Biomedical Engineering (BE)

- Advanced Biomedical Engineering
- Biomedical Engineering in Hospitals

* also known as Engineering Minors
For more details regarding specializations, refer website www.lpu.in

OPEN MINORS FOR ENGINEERING PROGRAMMES

We firmly believe that our students are citizen of the world and will contribute to the society and entire mankind. Open minors play pivotal role in this readiness as an Engineering graduate can take up courses in Management, Fashion Design, Journalism, Agriculture etc. so as to acquire multi-dimensional proficiency and to be able to pave bright new vision to be incorporated in crafting the sustainable societal solutions. Students are given an option to choose from a plethora of open minors such as :

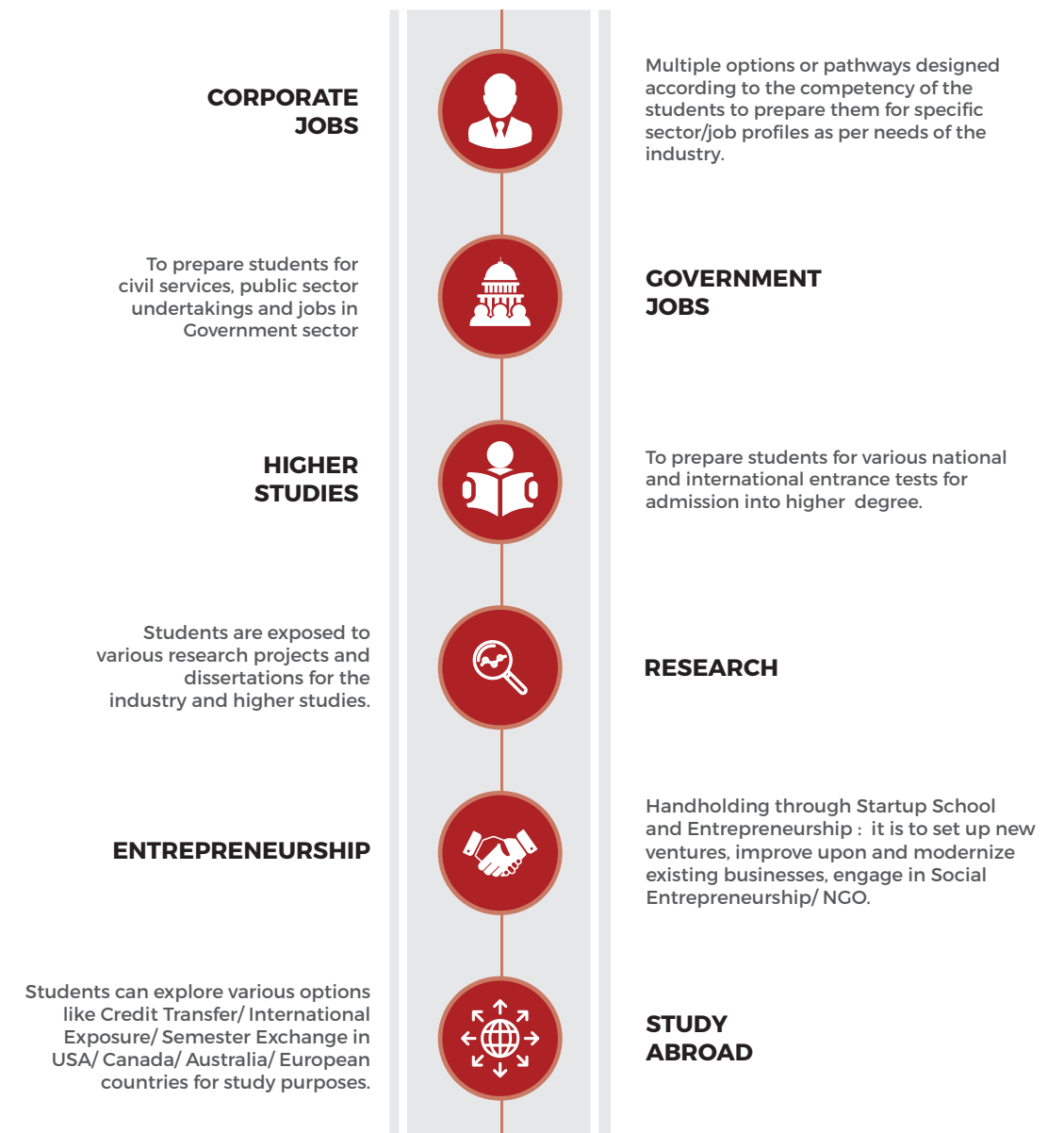
- | | | |
|--------------------------------------|--|-------------------------------------|
| • 2D Animation | • Fashion Business | • International Laws |
| • 3D Printing | • Financial Markets | • Lifestyle Design |
| • Airlines Hospitality | • Forensic & Criminal Investigation | • Management Fundamentals |
| • Banking & Financial Services | • Fundamentals of Finance | • Machine and Deep Learning for All |
| • Business Laws | • Gaming | • Marketing Management |
| • Computer Aided Design | • General Studies | • Operations |
| • Computer Aided Design and Analysis | • Geography | • Optics in Daily Life |
| • Data Science | • Graphics | • Physics of Materials |
| • Digital Marketing | • Health & Fitness | • Political Science |
| • Economics | • History | • Product Design |
| • Electrical and Electronics | • Human Resource Management | • Psychology |
| • Electronics Craftsmanship | • Intellectual Property and Cyber Laws | • Public Administration |
| • Embedded Systems | • International Business | • Punjabi |
| • English | • Interior Design | • Tourism Destination |
| • Environment | | • Water Chemistry |
| • Fashion Basics | | |

A student based on his zest, picks up the minor and fulfils the excitement of learning beyond books which is purely on student to have it or not.

Note: Minors as mentioned may be offered subject to minimum number of students and feasibility. For details, refer university website (www.lpu.in).

PLACEMENT PATHWAYS

As each individual is unique and approaches life in a different manner, so we allow each of them to choose his/her own placement pathway based on individual interest to prepare for life :



INDUSTRIAL TIE-UPS

For hands-on practical training and certifications in collaboration with world's top brands.



Fee Table [Programmes after 12th (10+2)]

The following table lists the fee after different Scholarship percentages (50%, 40%, 30% etc.) and these percentages vary with Phases of Admissions. To know the details of Phases and Scholarship bracket applicable, please refer Scholarship Scheme as detailed on initial pages of this brochure.

After 10+2 Programmes	Programme Fee* (per sem.)	Applicable fees after Scholarship (per sem. in ₹) as mentioned below				
		After 40% scholarship	After 30% scholarship	After 20% scholarship	After 15% scholarship	After 10% scholarship
ENGINEERING - CSE						
B.Tech.-CSE (including Dual Degree)	98000	58800	68600	78400	83300	88200
B.Tech.-CSE (Hons.)(including Integrated)	108000	64800	75600	86400	91800	97200
B.Sc. (Hons.) Agriculture	98000	58800	68600	78400	83300	88200

After 10+2 Programmes	Programme Fee* (per sem.)	Applicable fees after Scholarship (per sem. in ₹) as mentioned below				
		After 50% scholarship	After 40% scholarship	After 30% scholarship	After 20% scholarship	After 10% scholarship
ENGINEERING - Other Streams						
B.Tech.	98000	49000	58800	68600	78400	88200
B.Tech. (Hons.)	108000	54000	64800	75600	86400	97200
COMPUTER APPLICATIONS/ BOTANY/ ZOOLOGY/ CHEMISTRY/ PHYSICS/ MATHEMATICS						
BCA, Dual Degree BCA-MCA, B.Sc. (Information Technology), B.Sc. (Computer Science)	68000	34000	40800	47600	54400	61200
BCA (Hons.), Dual Degree BCA (Hons.)-MCA (Hons.)	78000	39000	46800	54600	62400	70200
B.Sc. (Hons.) Botany, B.Sc. (Hons.) Zoology, B.Sc. (Hons.) Statistics	58000	29000	34800	40600	46400	52200
B.Sc. (Hons.) Chemistry, B.Sc. (Hons.) Physics, B.Sc. (Hons.) Mathematics	58000	29000	34800	40600	46400	52200
BIOTECHNOLOGY/ MICROBIOLOGY/ FORENSIC SCIENCES/ AGRICULTURE						
B.Sc. (Hons.) Biotechnology	68000	34000	40800	47600	54400	61200
B.Sc. (Hons.) Microbiology, B.Sc. (Forensic Sciences)	68000	34000	40800	47600	54400	61200
FOOD TECHNOLOGY/ NUTRITION & DIETETICS/ PHYSIOTHERAPY/ AYURVEDIC PHARMACEUTICAL SCI.						
B.Sc. (Hons.) Food Technology, B.Sc. (Nutrition & Dietetics)	68000	34000	40800	47600	54400	61200
Bachelor of Physiotherapy (BPT)	78000	39000	46800	54600	62400	70200
B.Pharm. (Ayurveda)	68000	34000	40800	47600	54400	61200
MANAGEMENT/ COMMERCE/ ECONOMICS						
BBA, Dual Degree BBA-MBA, BBA (IT), BBA (Oil and Gas Management)	68000	34000	40800	47600	54400	61200
Integrated BBA - MBA, BBA (Hons.), Dual Degree BBA (Hons.) - MBA, BBA (Financial Markets), BBA (International Finance)	78000	39000	46800	54600	62400	70200
B.Com./ B.Sc. (Hons.) Economics	58000	29000	34800	40600	46400	52200
Integrated B.Com. - MBA	68000	34000	40800	47600	54400	61200
B.Com. (Hons.), Dual Degree B.Com. (Hons.) - MBA	68000	34000	40800	47600	54400	61200
B.Com. (Management Accounting and International Finance)	78000	39000	46800	54600	62400	70200

After 10+2 Programmes	Programme Fee* (per sem.)	Applicable fees after Scholarship (per sem. in ₹) as mentioned below				
		After 50% scholarship	After 40% scholarship	After 30% scholarship	After 20% scholarship	After 10% scholarship
LAW						
B.A., LL.B (Hons.); B.Com., LL.B. (Hons.); BBA, LL.B. (Hons.)	98000	49000	58800	68600	78400	88200
HOTEL MANAGEMENT & TOURISM						
Bachelor of Hotel Mgt. & Catering Technology (BHMCT), B.Sc. (Hotel Management), B.Sc. (Airlines, Tourism & Hospitality), BBA (Tourism & Hospitality), BBA (Airlines and Airport Management)	78000	39000	46800	54600	62400	70200
Diploma in Airline Cabin Crew and Hospitality	68000	34000	40800	47600	54400	61200
ARCHITECTURE/ PLANNING						
B.Arch., B.Plan.	98000	49000	58800	68600	78400	88200
INTERIOR & FURNITURE DESIGN/ PRODUCT & INDUSTRIAL DESIGN/ FASHION DESIGN						
B.Sc. (Design - Interior & Furniture), B.Design (Interior & Furniture), B.Design (Product & Industrial), B.Sc. (Design - Fashion), B.Design (Fashion)	98000	49000	58800	68600	78400	88200
MULTIMEDIA & ANIMATION/ JOURNALISM & FILM PRODUCTION						
B.Sc. (Design - Multimedia), B.Design (Multimedia), B.Sc. (Design - Graphics), B.Design (Graphics), B.Sc. (Design - Gaming), B.Design (Gaming), B.Sc. (Film & TV Production), B.Design (Film & TV Production)	98000	49000	58800	68600	78400	88200
B.A. (Journalism & Mass Communication)	98000	49000	58800	68600	78400	88200
FINE ARTS/ PERFORMING ARTS						
Bachelor of Fine Arts (BFA), B.A. (Fine Arts)	58000	29000	34800	40600	46400	52200
Diploma in Digital Photography	58000	29000	34800	40600	46400	52200
B.A. (Music Vocal/ Theatre), BPA (Music Vocal/ Theatre)	38000	19000	22800	26600	30400	34200
ARTS (HUMANITIES)						
Bachelor of Arts (B.A.)	38000	19000	22800	26600	30400	34200
B.A. (Hons.)	48000	24000	28800	33600	38400	43200
EDUCATION						
Integrated B.A. - B.Ed.,	38000	19000	22800	26600	30400	34200
Integrated B.Sc. - B.Ed.	38000	19000	22800	26600	30400	34200
PHYSICAL EDUCATION						
B.Sc. (Health and Physical Education), Bachelor of Physical Education & Sports (BPES)	38000	19000	22800	26600	30400	34200
PHARMACEUTICAL SCIENCES						
B.Pharm.	98000	49000	58800	68600	78400	88200
MEDICAL LABORATORY SCIENCES						
B.Sc. (Medical Lab. Technology)	68000	34000	40800	47600	54400	61200

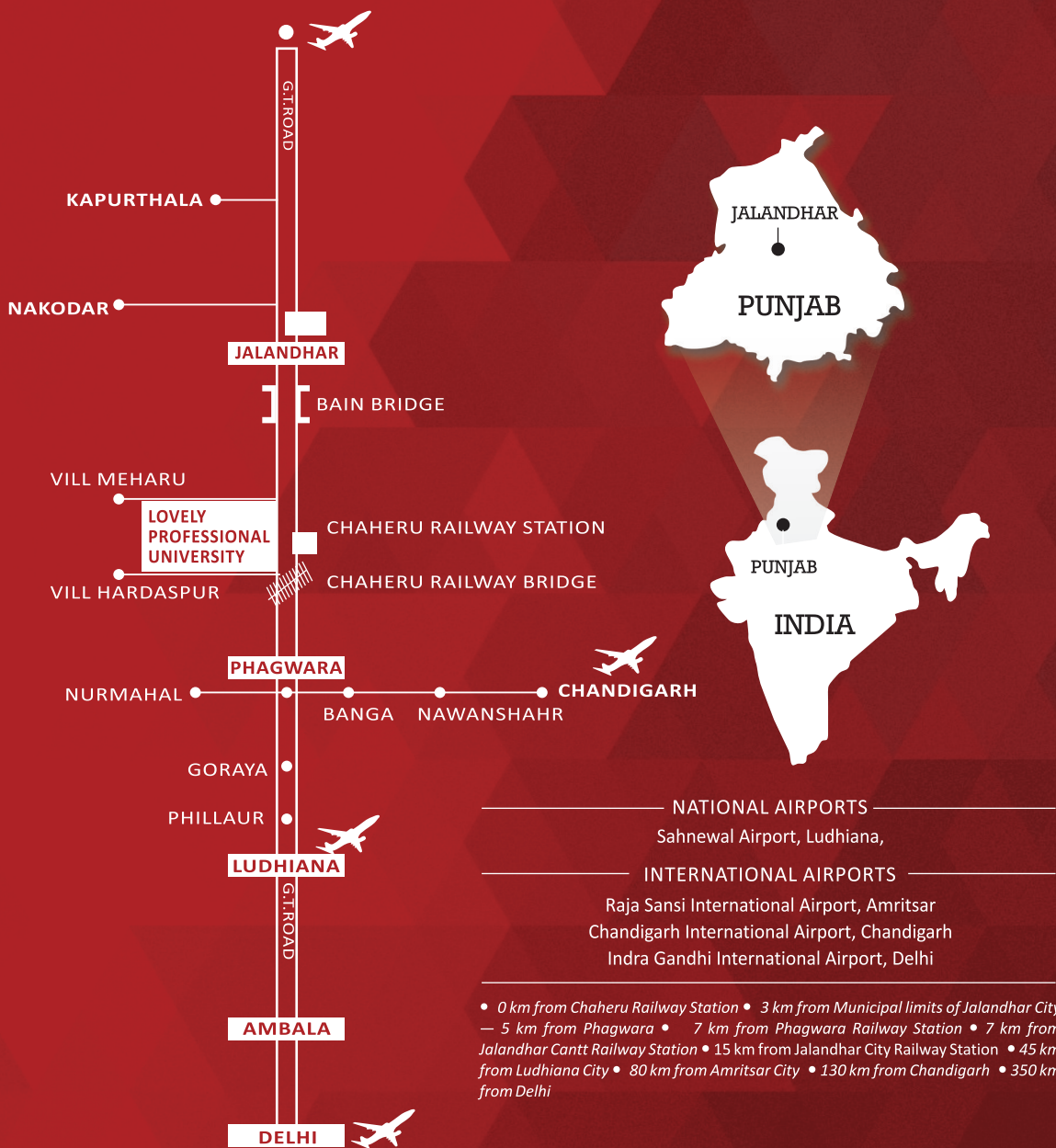
Examination Fee - Rs. 2500 per semester

E&OE

Everything mentioned above is subject to conditions & changes from time to time

E&OE

Location Map



The information provided in this Brochure is a general proposal and not a commitment / confirmation of any type. If the information available on the University website under the head Admissions i.e. <http://www.lpu.in/admission/> or Prospectus 2020 differs from the information provided in this Brochure, then the information available on the University website (under the head Admissions) or Prospectus 2020 or subsequent Corrigendum will prevail.



Use this Quick Response (QR) code to find out more on your smart phone. You just need to download any free QR code reader onto your phone and scan the QR code.



LOVELY
PROFESSIONAL
UNIVERSITY

Transforming Education Transforming India

Jalandhar-Delhi G.T.Road, Phagwara,
Punjab (India) 144411

For General Enquiry: Ph.: 01824-404455
SMS LPU to 53030

Email: admissions@lpu.co.in **Website:** www.lpu.in

Follow us on Social Media platforms

